

The Importance of Creating a Culture of Health in the Workplace

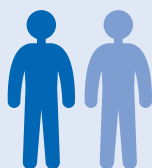
Workplace Solutions
From the American Cancer Society

More than half of all cancer deaths could be prevented by making healthy choices like not smoking, staying at a healthy weight, eating right, keeping active, and getting recommended screening tests. Why does this matter to you, as an employer? This means you can help prevent the leading cause of death in your workforce. If all employers join in the fight, together we can help prevent cancer in all working Americans, which is about half of the United States population. Changing the culture of health in our workplaces is beneficial to employers and employees – improving employee health, productivity, and retention, while helping to control health care costs.



POOR EMPLOYEE HEALTH

1 in 2 adults



have been diagnosed with at least one chronic disease.¹



2 out of 3 adults are overweight or obese.²



Men have a **1-in-2** lifetime risk of developing cancer.³
& women have a **1-in-3** lifetime risk of developing cancer.³

IMPACT OF EMPLOYEE HEALTH BEHAVIORS



Tobacco Use

Smokers average

6.2
DAYS

in absenteeism⁴

Non-smokers average

3.9
DAYS

The Society estimates that



30% of cancer deaths are caused by tobacco use.³

1 in 2 smokers will die of tobacco-related diseases.⁵



Nutrition

Obesity costs:



\$1,850-\$5,500

more than normal weight individual's health care costs⁶



\$4.3
billion

in annual losses to businesses can be attributed to obesity-related job absenteeism⁷



Physical Activity

Employees spend



more than half

of their waking hours at work and spend the majority of that time sitting.⁸



Time spent sitting increases mortality risk independent of physical activity levels.⁹



Preventive Screenings

66.5%

OF WOMEN OVER 40 received a mammogram¹⁰

59.1%

OF MEN AND WOMEN OVER 50 received colorectal cancer screening¹⁰

BENEFITS FOR EMPLOYERS AND EMPLOYEES

Wellness program participants averaged 3 fewer sick days than non-participants in one 6 year study.¹¹

IMPROVE MORALE AND ATTRACT AND RETAIN TALENT

Employees who participate in wellness programs are more likely to stay with their employer.



say benefits are an important factor in deciding to remain with their current company.¹²

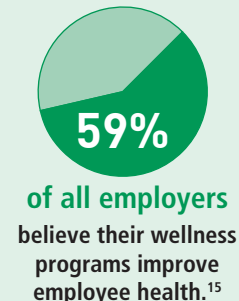
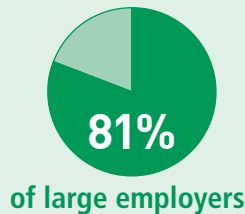
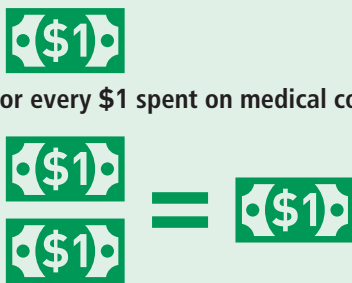
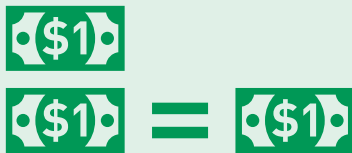
IMPROVE HEALTH BEHAVIORS



Individualized programs to increase physical activity and incorporate it into daily routines provide a **35% increase in time spent** being active and a **64% increase in amount of calories burned**.¹³

RETURN ON INVESTMENT

AVERAGE ROI OF CORPORATE WELLNESS:



The American Cancer Society recognizes that creating a culture of health in your workplace is a time-consuming and sometimes difficult task. We work with our corporate partners to help them assess the current status of their wellness program and develop a tangible plan for creating a culture of health. Improving the health of the workforce by improving health behaviors helps reduce the burden of cancer. Learn more at acsworkplacesolutions.com.

USING THE TOOLS



Benefits

Provide **100% coverage** for cancer screening. This benefit increases breast cancer screenings by a median of **11.5%**.¹⁶



Policies

Enhance access for physical activity. This policy change leads to an **8.2% increase in calories burned**, with a **48.4%** median increase in the amount of weekly physical activity.¹³



Programs

Offer a multicomponent tobacco-cessation intervention that includes telephone support. Enacting these multicomponent programs **increases quit rates by a median of 6.4%**.¹⁷



Tracking

Tracking employee health stats and participation in wellness programs can help show results. A review of employers that tracked employee exercise showed **62% found an improvement in employee physical activity** after implementation of a physical activity program at work.¹⁸



Communication

Survey employees about health behaviors, give feedback, and offer health education programs. When this process was used for tobacco use, smoking rates had a median **decrease of 13.3%** and the percentage of **employees who quit was 17.8%**.¹⁹



We **save lives** and create more birthdays by helping you stay well, helping you get well, by finding cures, and by fighting back.

cancer.org | 1.800.227.2345

Sources:

1. Wu SY, Green A. Projection of chronic illness prevalence and cost inflation. Santa Monica, CA: RAND Health; 2000.
2. Ogden CL, Carroll MD, McDowell MA, Flegal KM. Obesity among adults in the United States—no change since 2003–2004. NCHS data brief no 1. Hyattsville, MD: National Center for Health Statistics; 2007.
3. American Cancer Society. *Cancer Facts & Figures 2013*. Atlanta: American Cancer Society; 2013.
4. Halpern MT, Shikar R, Rentz AM, Khan ZM. Impact of smoking status on workplace absenteeism and productivity. *Tobacco Control* 2001;10:233–238.
5. WHO Tobacco Fact Sheet accessed May 16, 2013 <http://www.who.int/mediacentre/factsheets/fs339/en/>
6. Moriarty JP, Branda ME, Olsen KD, et al. The effects of incremental costs of smoking and obesity on health care costs among adults: a 7-year longitudinal study. *J Occup Environ Med*. 2012;54(3):286–91.
7. Institute of Medicine. *Accelerating Progress in Obesity Prevention: Solving the Weight of the Nation*. Washington, DC: National Academies Press, 2012.
8. Ryan CG, Grant PM, Dall PM, Granat MH. Sitting patterns at work: objective measurement of adherence to current recommendations. *Ergonomics* 2011;54(6):531–8.
9. Patel AV, Bernstein L, Deka A, et al. Leisure Time Spent Sitting in Relation to Total Mortality in a Prospective Cohort of US Adults. *Am J Epidemiol* 2010; 172 (4):419–429.
10. American Cancer Society. *Cancer Prevention & Early Detection Facts & Figures 2013*. Atlanta: American Cancer Society; 2013.
11. Aldana, S. G., et al., Financial impact of a comprehensive multisite workplace health promotion program. *Prev Med*, 2005. 40(2): pp. 131–137.
12. National Business Group on Health, Perceptions of Health Benefits in a Recovering Economy, 2012.
13. Kahn EB, Ramsey LT, Brownson RC, et al. The Effectiveness of Interventions to Increase Physical Activity: A Systematic Review. *Am J Prev Med* 2002;22(4S):73–107.
14. Baicker K, Cutler D, and Song Z. Workplace wellness programs can generate savings. *Health Aff (Millwood)*, 2010. 29(2): pp. 304–311.
15. Kaiser Family Foundation, Employer Health Benefits: 2010 Annual Survey, 2010, The Kaiser Family Foundation, Menlo Park, Calif.; Health Research & Educational Trust, Chicago, Ill.
16. Sabatino SA, Lawrence B, Elder R, et al. Effectiveness of Interventions to Increase Screening for Breast, Cervical, and Colorectal Cancers: Nine Updated Systematic Reviews for the Guide to Community Preventive Services. *Am J Prev Med* 2012;43(1):97–118.
17. Hopkins DP, Briss PA, Ricard CJ, et al. Reviews of Evidence Regarding Interventions to Reduce Tobacco Use and Exposure to Environmental Tobacco Smoke. *Am J Prev Med* 2001;20(2S):16–66.
18. Mattke S, Schnyer C, Van Busum KR. A Review of the U.S. Workplace Wellness Market. *Rand Health* July 2012.
19. Soler RE, Leeks KD, Razi S, et al. A Systematic Review of Selected Interventions for Worksites Health Promotion: The Assessment of Health Risks with Feedback. *Am J Prev Med* 2010;38(2S):S237–S262.